

5719 Timber Ln.

5 Bedrooms | 5 ½ Bathrooms | 5,500 SQ FT



PIKE
PROPERTIES



- Perched on a picturesque 2/3-acre homesite in prestigious Mammoth Oaks rests a home unlike anything else.
- Cape Dutch architecture beckons the eye to appreciate all the details that make this home one-of-a-kind.
- Expansive open-concept main living area with plethora of natural light and sophisticated style will elicit all sorts of wonderful emotions as you reside among the designer finishes and White Oak hardwoods.
- A 10' center island topped in white marble anchors the kitchen with custom beaded inset cabinetry, 48" dual-fuel range, 40" cabinet front fridge, and separate scullery.
- The family dining room is fit for royalty with a stylish built-in buffet niche, while the living room is warm and inviting with mission style plaster wrapped fireplace and wall of doors opening to the covered terrace.
- The owner's retreat is pure bliss with wood accented tray ceiling and a spa bath boasting a Parapet vault ceiling to replicate the front elevation Parapet walls, 12' wide walk in shower with designer tile and multiple shower heads, freestanding soaking tub, and separate vanities.
- Heading in from the oversized two car garage you'll find a spacious drop zone and dog feeding station.
- An upstairs landing with large windows overlooks the stream out front and around the corner the barrel-vaulted kid's homework nook + laundry room with loads of counter and cabinet space are fun and functional.
- An expansive 400+ square foot bonus room space includes a special kids play nook space.
- 3 secondary bedrooms all with private baths and walk-in closets and a handy powder bath are also upstairs.
- The home that can't be found has been found at 5719 Timber Lane in the heart of South Charlotte.

PIKE
PROPERTIES

PHONE
NO

704 332 3332

FAX
NO

704 973 0000

1401 CENTRAL AVE.
SUITE 200-G
CLT, NC 28205

PIKEPROPERTIES.COM

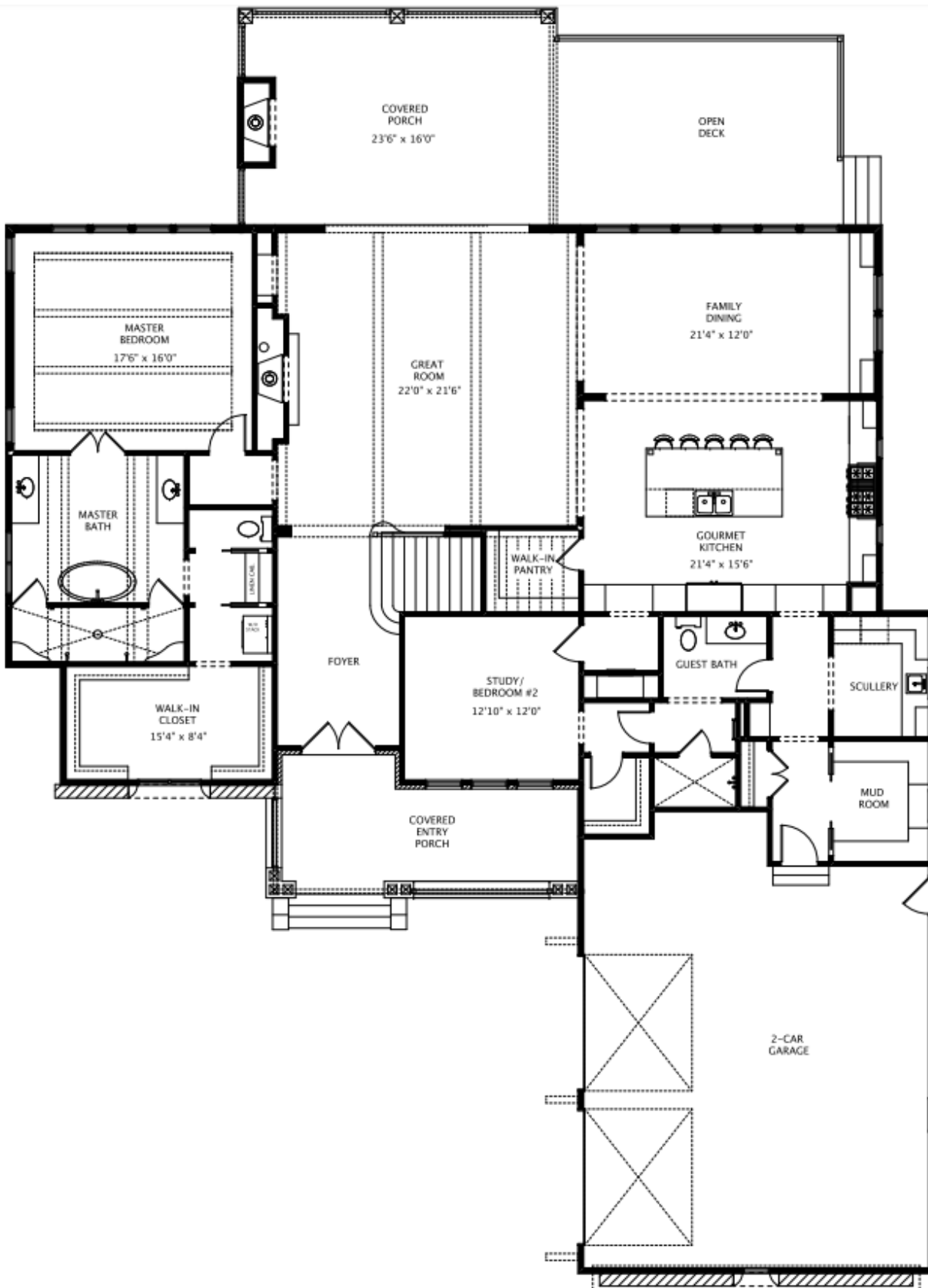


5719 Timber Ln.

5 Bedrooms | 5 ½ Bathrooms | 5,500 SQ FT



PIKE
PROPERTIES



PIKE
PROPERTIES

PHONE
Nº 704 332 3332
FAX
Nº 704 973 0000

1401 CENTRAL AVE.
SUITE 200-G
CLT, NC 28205

PIKEPROPERTIES.COM

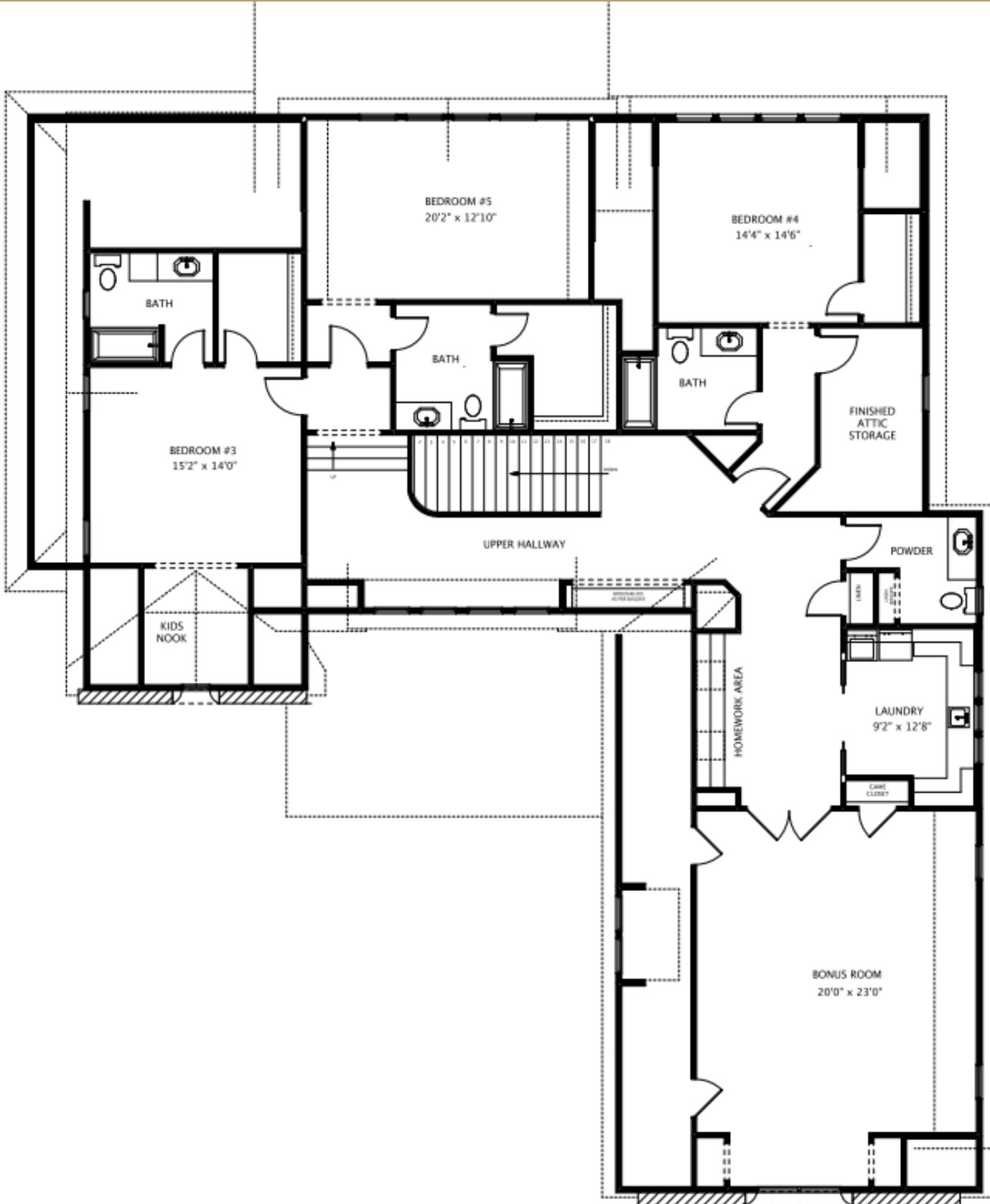


5719 Timber Ln.

5 Bedrooms | 5 ½ Bathrooms | 5,500 SQ FT



PIKE
PROPERTIES



PIKE
PROPERTIES

PHONE
NO 704 332 3332
FAX
NO 704 973 0000

1401 CENTRAL AVE.
SUITE 200-G
CLT, NC 28205

PIKEPROPERTIES.COM

