

616 MCALWAY RD.

5 BEDROOMS | 4 BATHROOMS | 4,200 SQ FT



- Old world European architectural elements and striking angles frame this Cotswold residence.
- An expansive family room anchors the main floor and is the perfect gathering spot with a central fireplace, built-ins, and unique coffered ceiling detail.
- A center island kitchen exhibits Jenn-Air appliances, hand selected marble countertops, apron front sink, and hidden cabinet front walk-in pantry, all opening up to the bright and airy dining room.
- The dining room boasts cedar beams, a unique serving area, and large set of glass doors opening onto the covered porch with fireplace overlooking a private, flat backyard that is just begging for a pool.
- Option for 2 home offices or one home office and one guest bedroom on the main level.
- Full bath w/ zero-entry shower, mud room w/ built-in drop zone cabinetry, and home management space on main.
- Upstairs Owner's Retreat offers vaulted ceiling, freestanding soaking tub, furniture vanity, walk-in shower w/ designer tile, and walk-in closet large enough to function as a boutique clothing store!
- 3 secondary bedrooms are located upstairs and all have connected bathroom access.
- Laundry room with sink and cabinet space, plus a linen closet.
- Spacious flex room space offers a wide range of options and don't miss the kids nook/storage space.
- Walk-in attic storage and plenty of closet space throughout.
- Located in the heart of Cotswold within close-proximity to just about anything you can dream of.

PIKE
PROPERTIES

PHONE
Nº 704 332 3332
FAX
Nº 704 973 0000

1401 CENTRAL AVE.
SUITE 200-G
CLT, NC 28205

PIKEPROPERTIES.COM



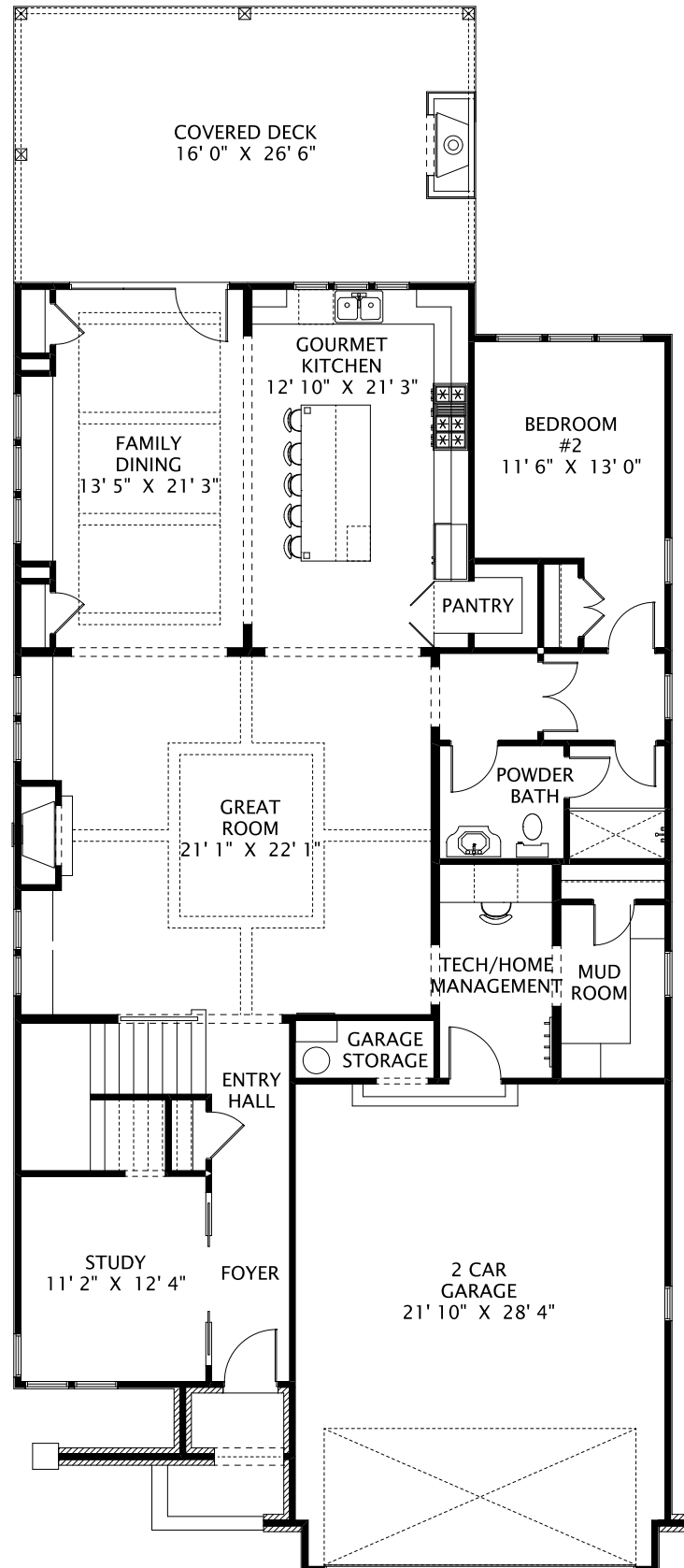
616 MCALWAY RD.

5 BEDROOMS | 4 BATHROOMS | 4,200 SQ FT



PIKE

PROPERTIES



PIKE

PROPERTIES

PHONE
Nº 704 332 3332

FAX
Nº 704 973 0000

1401 CENTRAL AVE.
SUITE 200-G
CLT, NC 28205

PIKEPROPERTIES.COM

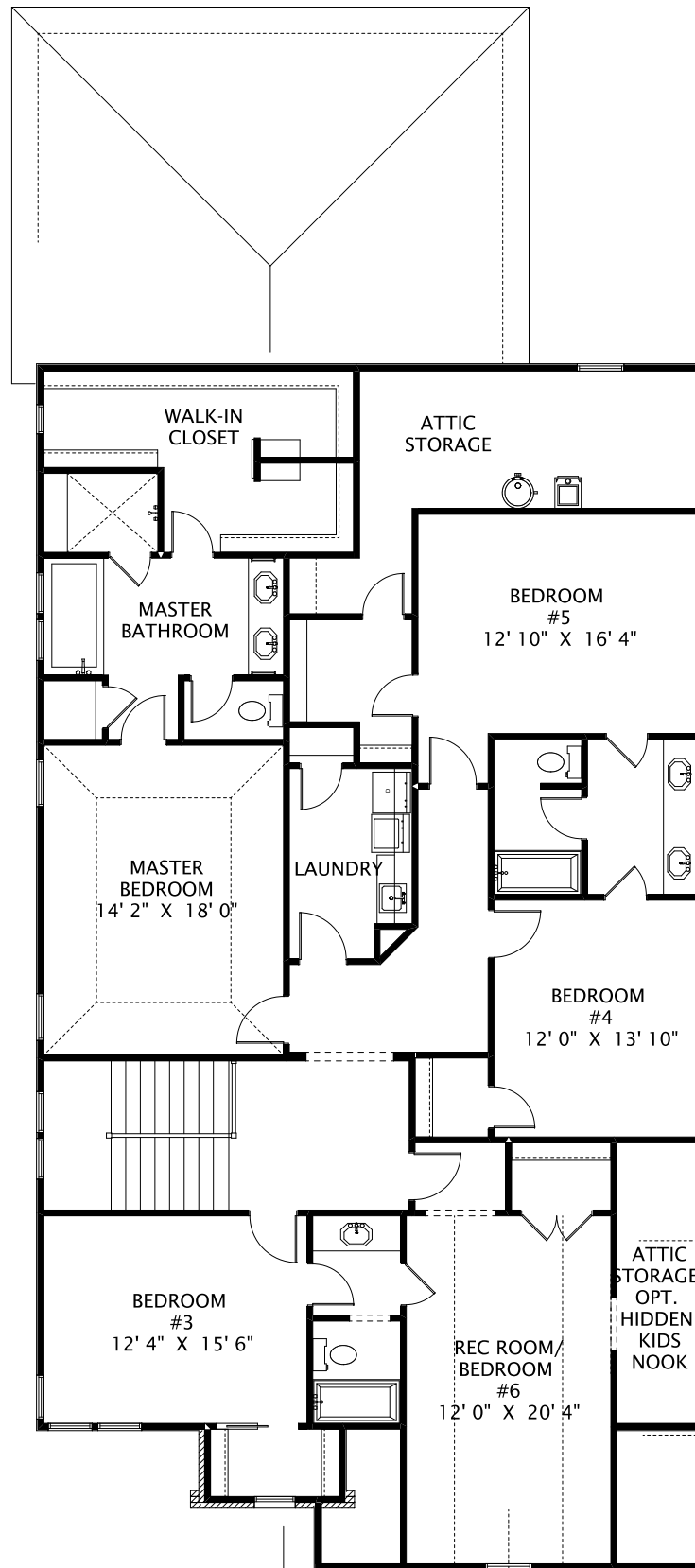


616 MCALWAY RD.

5 BEDROOMS | 4 BATHROOMS | 4,200 SQ FT



PIKE
PROPERTIES



PIKE
PROPERTIES

PHONE
Nº 704 332 3332

FAX
Nº 704 973 0000

1401 CENTRAL AVE.
SUITE 200-G
CLT, NC 28205

PIKEPROPERTIES.COM

