

# 628 BERTONLEY AVE.

5 BEDROOMS | 4 ½ BATHROOMS | 3,736 SQ FT



## PIKE

PROPERTIES



- Stone veneer, classic proportions, and a welcoming front porch accent this home to any and all who pass by.
- A 10' center island anchors the kitchen which features custom cabinets, designer tile, Jenn-Air 48" range, 60" professional-grade fridge, and a walk-in pantry.
- Dining, both formal and informal is accomplished in style with a family dining room that boasts Eastern and Western exposures for loads of natural light and is accented by a designer chandelier.
- Spend hours relaxing in the living room with a vent-free gas fireplace and flush mount cedar beams, or head outside to the covered porch overlooking a private backyard.
- Entering the home from the detached 2-car garage in the rear is a rear entry foyer with drop zone space.
- Dedicated Power Room centrally located on the main floor.
- Main floor en-suite guest bedroom with zero-entry shower so guests can stay in privacy and style.
- Through a pair of pocket doors is the perfect home office, sitting room, music room, or library.
- The upstairs secondary bedrooms offer flexibility for a variety of lifestyles, including an option for 3 guest bedrooms, 2 guest bedrooms and a bonus, or another variation therein.
- Tucked away upstairs at the rear of the home is an owner's retreat offering a tray ceiling w/ flush beams, dual furniture vanities, freestanding soaking tub, large walk-in shower with dry zone, and spacious walk-in closet.
- Walk-in laundry room with counter/cabinet space and designer floor tile makes laundry enjoyable.
- Prime Cotswold location with great schools and close proximity to Uptown, SouthPark, and more.

## PIKE

PROPERTIES

PHONE  
NO

704 332 3332

FAX  
NO

704 973 0000

1401 CENTRAL AVE.  
SUITE 200-G  
CLT, NC 28205

PIKEPROPERTIES.COM



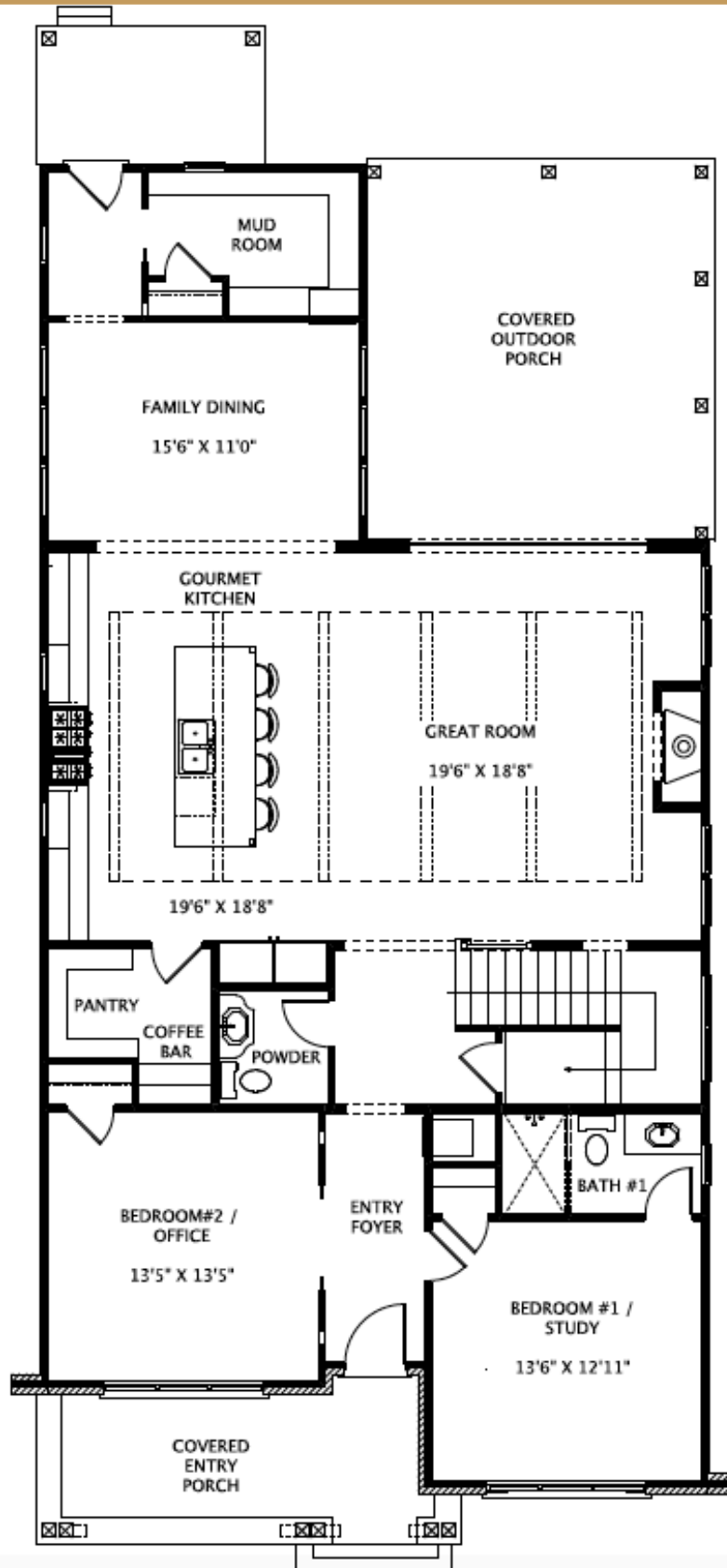
# 628 BERTONLEY AVE.

5 BEDROOMS | 4 ½ BATHROOMS | 3,736 SQ FT



## PIKE

PROPERTIES



## PIKE

PROPERTIES

PHONE  
Nº 704 332 3332

FAX  
Nº 704 973 0000

1401 CENTRAL AVE.  
SUITE 200-G  
CLT, NC 28205

PIKEPROPERTIES.COM



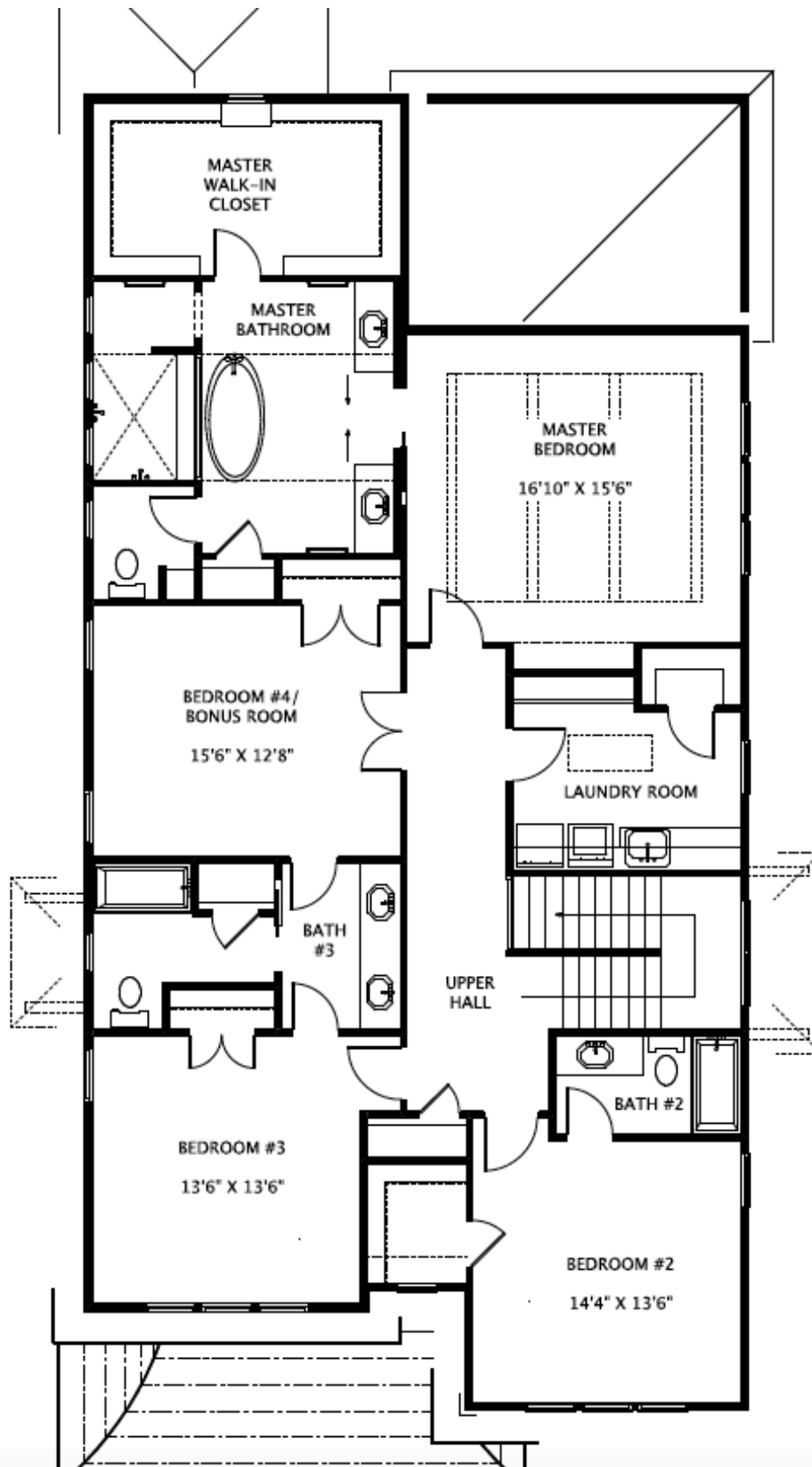
# 628 BERTONLEY AVE.

5 BEDROOMS | 4 ½ BATHROOMS | 3,736 SQ FT



## PIKE

PROPERTIES



## PIKE

PROPERTIES

PHONE  
Nº 704 332 3332

FAX  
Nº 704 973 0000

1401 CENTRAL AVE.  
SUITE 200-G  
CLT, NC 28205

PIKEPROPERTIES.COM

